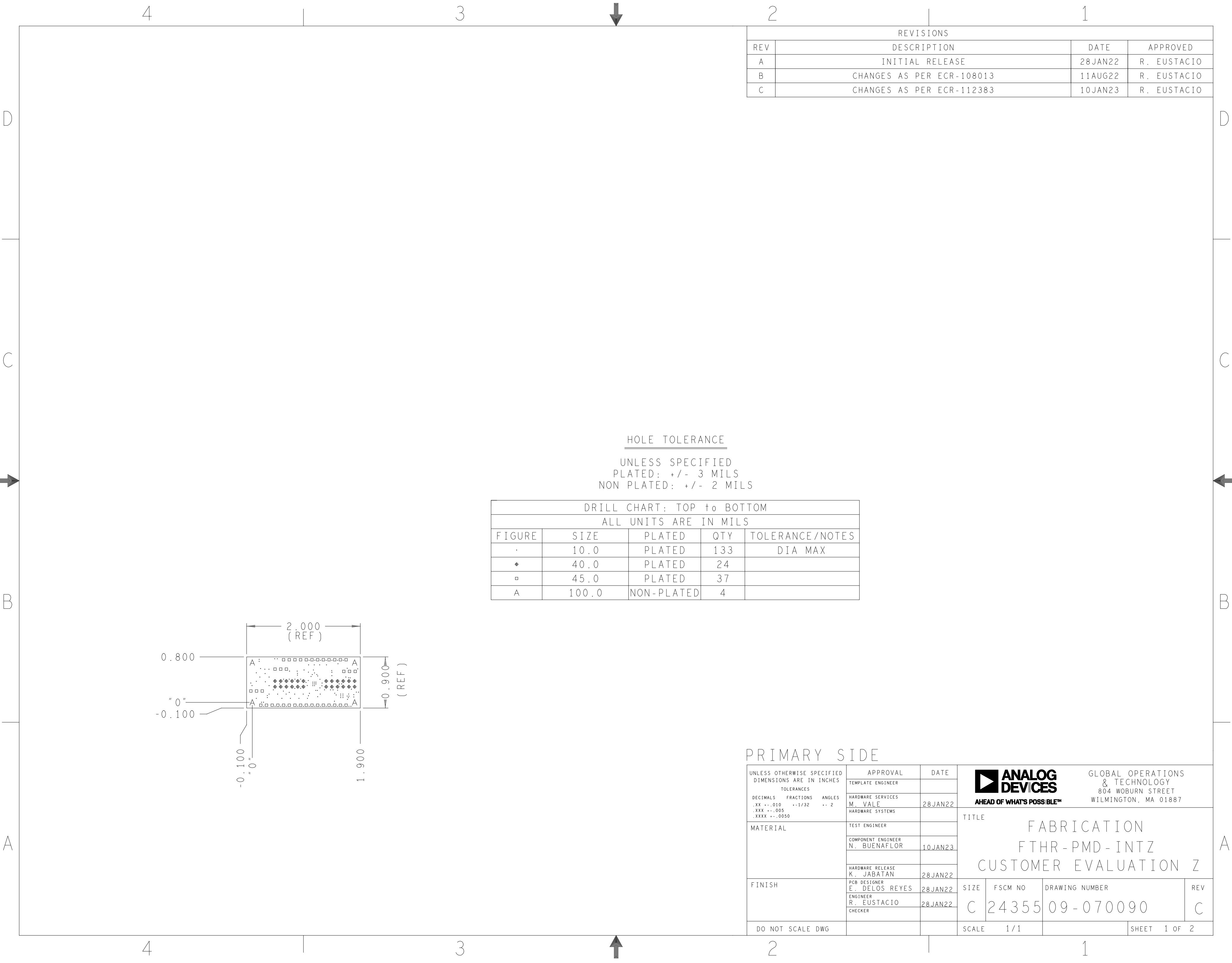


SECONDARY SIDE

<div><div><div></div><div><div>ANALOG</div><div>DEV</div><div>CES</div></div></div><div>AHEAD OF WHAT'S POSSIBLE™</div></div> <div>GLOBAL OPERATIONS & TECHNOLOGY 804 WOBURN STREET WILMINGTON, MA 01887</div>			
SIZE	FSCM NO	DRAWING NUMBER	REV
C	24355	01-070090	C
SCALE	1 / 1	SHEET 2 OF 2	



REVISIONS			
REV	DESCRIPTION	DATE	APPROVED
A	INITIAL RELEASE	28JAN22	R. EUSTACIO
B	CHANGES AS PER ECR-108013	11AUG22	R. EUSTACIO
C	CHANGES AS PER ECR-112383	10JAN23	R. EUSTACIO

DRILL CHART: TOP to BOTTOM				
ALL UNITS ARE IN MILS				
FIGURE	SIZE	PLATED	QTY	TOLERANCE/NOTES
.	10.0	PLATED	133	DIA MAX
◆	40.0	PLATED	24	
▣	45.0	PLATED	37	
A	100.0	NON-PLATED	4	

UNLESS OTHERWISE SPECIFIED DIMENSIONS ARE IN INCHES TOLERANCES DECIMALS FRACTIONS ANGLES .XX -.010 --1/32 -- 2 .XXX -.005 .XXXX -.0050		APPROVAL	DATE	<div><div><div></div><div>ANALOG DEVICES</div><div>AHEAD OF WHAT'S POSSIBLE™</div></div><div>GLOBAL OPERATIONS & TECHNOLOGY 804 WOBURN STREET WILMINGTON, MA 01887</div></div>		
		TEMPLATE ENGINEER				
		HARDWARE SERVICES M. VALE	28JAN22			
		HARDWARE SYSTEMS				
MATERIAL		TEST ENGINEER		TITLE FABRICATION FTHR-PMD-INTZ CUSTOMER EVALUATION Z		
		COMPONENT ENGINEER N. BUENAFLO	10JAN23			
		HARDWARE RELEASE K. JABATAN	28JAN22			
FINISH		PCB DESIGNER E. DELOS REYES	28JAN22	SIZE	FSCM NO	DRAWING NUMBER
		ENGINEER R. EUSTACIO	28JAN22	C	24355	09-070090
		CHECKER				
DO NOT SCALE DWG				SCALE	1/1	SHEET 1 OF 2

4

3

2

1

D

C

B

A

SPECIFICATIONS:

ROHS COMPLIANCE NOTE: HOMOGENOUS MATERIALS IN THIS BOARD SHALL BE COMPLIANT THE EU RoHS DIRECTIVE 2002/95/EC

MATERIALS; ALL LAMINATES AND BONDING MATERIALS SHOULD BE SELECTED FROM IPC-4101 OR IPC-4103, MINIMUM Tg>170degC, Td>300degC, U.L. RATING OF 94 V-0

MATERIAL FAMILY; ISOLA370HR OR SI000-2 OR IT180 OR EQUIVALENT.

CLADDING; EXTERNAL LAYERS .5 OZ. COPPER, OVERPLATE TO 1.5 OZ.
~~INTERNAL SIGNAL LAYERS .5 OZ. COPPER.~~
INTERNAL PLANE LAYERS 1 OZ. COPPER.

NOTE: IF THE LAYER STACKUP CONFLICTS WITH THE ABOVE CLADDING SPECIFICATIONS THEN THE LAYER STACKUP SHALL TAKE PRECEDENCE.

SOLDER MASK; SHALL BE LIQUID PHOTOIMAGEABLE (LPI) APPLIED ON BOTH SIDES OVER BARE COPPER OR GOLD AND SHALL MEET IPC-SM-840 (LATEST REV.) CLASS 3. COLOR GREEN.

SILK SCREEN; SHALL BE PERMANENT NON-CONDUCTIVE EPOXY INK, COLOR: WHITE
SYNTHETIC INKJET PRINTING ALLOWED FOR DENSE BOARDS, COLOR: WHITE

SURFACE FINISH; ENIG (ELECTROLESS NICKEL/IMMERSION GOLD) PER IPC-4552 LATEST REVISION

INTENTIONAL SHORTS; IF SUPPLIED DATA INCLUDES A FILE "READ_ME.2", THEN INTENTIONAL NET SHORTS EXIST. CUSTOMER REVIEW AND APPROVAL IS REQUIRED IF SUPPLIED DATA REPORTS ANY CONDITION THAT DOES NOT MATCH "READ_ME.2" FILE PROVIDED.

TEST REQUIREMENTS; 100% NETLIST ELECTRICAL VERIFICATION USING CUSTOMER SUPPLIED IPC-D-356 NETLIST FOR OPENS AND SHORTS WHEN "GERBER DATA" IS PROVIDED. THIS VERIFICATION ALSO REQUIRED FOR "ODB+." DATA PER EMBEDDED NETLIST.

REQUIREMENTS:

1. REFER TO IPC-6010 SERIES (LATEST REV.), CLASS 2 FOR FABRICATION UNLESS OTHERWISE SPECIFIED.

2. ACCEPTABILITY PER ANALOG DEVICES, INC. SPECIFICATION TST00115, (LATEST REVISION.)

3. MODIFICATIONS TO THE ARTWORK ARE NOT ALLOWED WITHOUT WRITTEN AUTHORIZATION.

4. HOLE PATTERN TOLERANCES FOR UNDIMENSIONED HOLES SHALL BE A DIAMETER OF 0.005 INCHES FROM THEIR TRUE POSITION.

5. PLATED HOLE WALL THICKNESS SHALL NOT BE LESS THAN 0.001 INCH MINIMUM AVERAGE, WITH NO READING LESS THAN .0008 INCH BY CROSS SECTION.

6. HOLE DIAMETERS APPLY AFTER PLATING.

7. FINISHED CONDUCTOR WIDTHS SHALL NOT BE REDUCED FROM THE NOMINAL INDICATED ON THE MASTER PATTERN, BY MORE THAN THE CONDUCTOR THICKNESS.

8. MINIMUM DESIGN LINE WIDTH IS .008 INCH.

9. MINIMUM DESIGN SPACING IS .0065 INCH.

~~10. NON-FUNCTIONAL PAD REMOVAL FROM INNER SIGNAL LAYERS MAY BE PERFORMED AFTER CUSTOMER APPROVAL.~~

11. IF PAD SIZES PROVIDED ARE NOT LARGE ENOUGH TO MAINTAIN ANNULAR RING REQUIREMENT, MFR. MAY REQUEST APPROVAL TO TEAR DROP PADS TO MAINTAIN ANNULAR RING. (AT PAD TO TRACE INTERSECTION ONLY AND ELECTRICAL INTEGRITY MUST BE MAINTAINED.)

12. THIEVING MAY BE ADDED TO COMPENSATE FOR LOW COPPER DENSITY AREAS ON THIS DESIGN ONLY AFTER REVIEW AND APPROVAL FROM THE CUSTOMER:

A. THIEVING TO CARD EDGE, FIDUCIALS, NON-PLATED THROUGH HOLES, ALL OTHER FEATURES TO BE 0.200 INCH MINIMUM.
B. THERE SHALL BE NO THIEVING IN ANY AREAS FREE OF SOLDER MASK OR INTERNAL COPPER PLANES.

13. MFR. TO LEGIBLY ETCH OR STAMP/SCREEN WITH PERMANENT NON-CONDUCTIVE INK ON SECONDARY SIDE IN A CLEAR AREA UNLESS OTHERWISE INDICATED;

A. U.L. CODE-FLAMMABILITY RATING D. MFR LOGO
B. DATE CODE (STAMP). E. SUCCESSFUL ELECTRICAL TEST.
C. LOT NUMBER

14. REPAIRS PER IPC-7711/21 (LATEST REV.) ARE ALLOWED.

15. BOARDS TO BE SHIPPED IN ARRAYS AND KEEP INTACT. PANEL TO BE SUBJECTED TO CUSTOMER'S APPROVAL. PANELED SOLDER PASTE STENCIL SHOULD BE SENT TO THE CUSTOMER.

4 LAYER STACKUP

NOMINAL FINISHED BOARD THICKNESS 0.062" +/- 10%

PRIMARY SILKSCREEN

PRIMARY SOLDER MASK

PRIMARY SIDE (LAYER 1)

L2_GND PLANE (LAYER 2)

L3_PWR PLANE (LAYER 3)

SECONDARY SIDE (LAYER 4)

SECONDARY SOLDER MASK

SECONDARY SILKSCREEN

PRIMARY SIDE

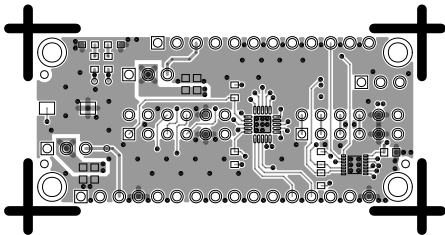
ANALOG DEVICES

AHEAD OF WHAT'S POSSIBLE™

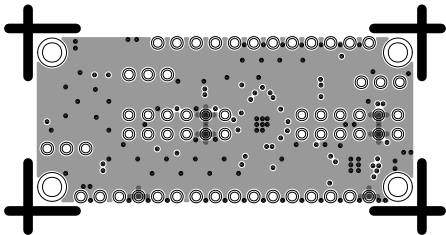
GLOBAL OPERATIONS & TECHNOLOGY
804 WOBURN STREET
WILMINGTON, MA 01887

SIZE	FSCM NO	DRAWING NUMBER	REV
C	24355	09-070090	C
SCALE	1 / 1		SHEET 2 OF 2

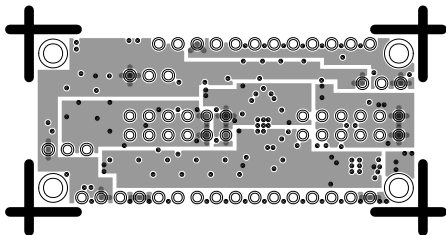
L1 PRIMARY
08-070090-01
REV C



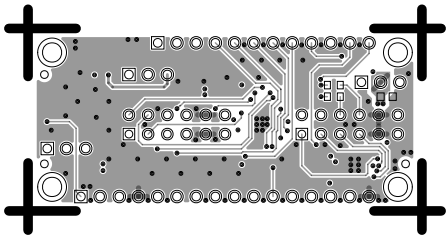
L2 GND
08-070090-07
REV C



L3 PWR
08-070090-08
REV C



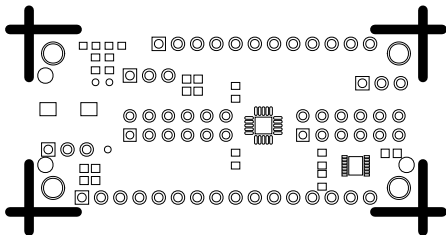
L4 SECONDARY
08-070090-02
REV C



SOLDERMASK PRIMARY

08-070090-04

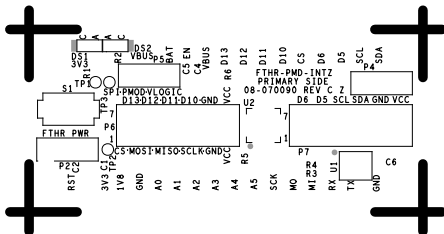
REV C



SILKSCREEN PRIMARY

08-070090-03

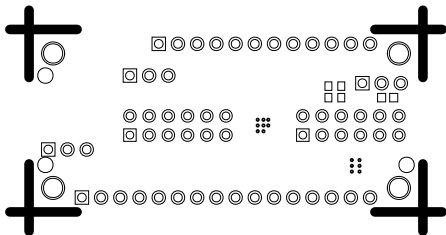
REV C



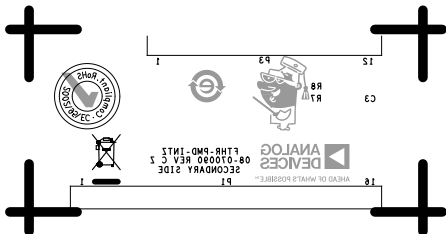
SOLDERMASK SECONDARY

08-070090-06

REV C



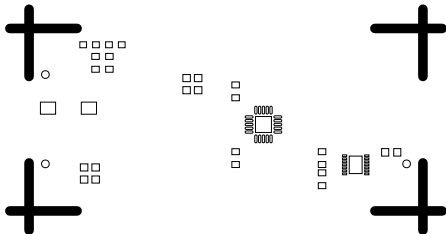
SILKSCREEN SECONDARY
08-070090-05
REV C



PASTEMASK PRIMARY

08-070090-09

REV C



PASTEMASK SECONDARY

08-070090-10

REV C

